

Recombinant Human IL2 Protein, C-His

Overview

Catalog No.	YBH121012
Form	Lyophilized
Storage buffer	Lyophilized from a solution in PBS pH 7.4, 0.02% NLS, 1 mM EDTA, 4% Trehalose, 1% Mannitol.
Purity	>90% as determined by SDS-PAGE.
Applications	ELISA, Immunogen, SDS-PAGE, WB, Bioactivity testing in progress
Endotoxin level	Please contact with the lab for this information.
Expression system	E. coli
Accession	P60568
Protein length	Ala21-Thr153
Nature	Recombinant
Stability and Storage	Use a manual defrost freezer and avoid repeated freeze thaw cycles. Store at 2 to 8°C for frequent use. Store at -20 to -80°C for twelve months from the date of receipt.

Reconstitute in sterile water for a stock solution. Adjust the volume of sterile water so that, after reconstitution, the final stock concentration matches the value indicated on the product label or datasheet.

RECONSTITUTION PROTOCOL

1. Allow the product to be reconstituted and the reconstitution diluent to reach room temperature.
2. Tap or briefly centrifuge the product vial before opening to dislodge any lyophilized material that may be dispersed on the wall or cap of the vial.
3. Use the diluent and stock concentration recommended in the product datasheet. If preparing a stock concentration higher than recommended, contact Technical Service.
4. After adding the diluent, re-cap the vial and invert gently by hand or place on a slow rocking platform to allow the reconstitution diluent to coat all the surfaces inside the vial. *Note: Do not mix by vortexing or by pipetting the material up and down.*
5. Allow the vial to sit at room temperature with gentle agitation for at least 15 minutes before aliquotting or using.
6. Store the reconstituted material in single use aliquots in polypropylene or siliconized tubes. Aliquots of 10 µL or larger are recommended.

Reconstitution

Alternative name

IL2, IL-2, Aldesleukin, Interleukin-2, TCGF, T-cell growth factor

Species

Homo sapiens (Human)

Shipping

In general, proteins are provided as lyophilized powder/frozen liquid. They are shipped out with dry ice/blue ice unless customers require otherwise.

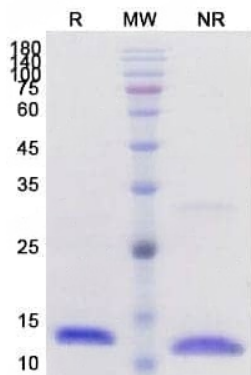
Predicted molecular weight

16.67 kDa

Note

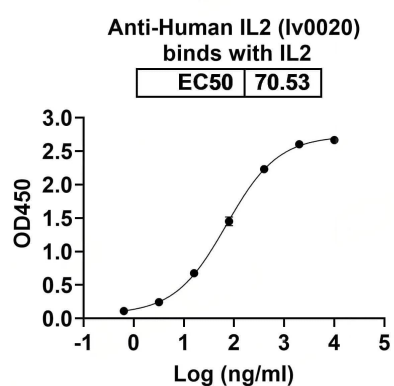
For research use only.

Images



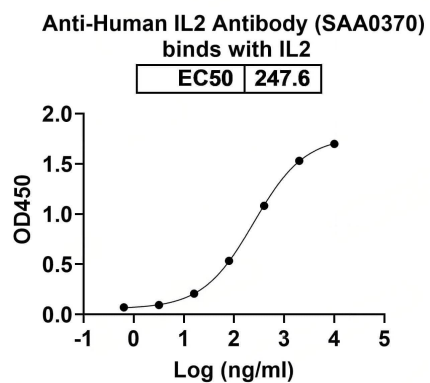
SDS-PAGE

SDS-PAGE for Recombinant Human IL2 Protein, C-His



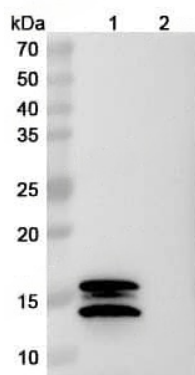
Bioactivity

Detects Human IL2 Antibody in indirect ELISAs.



Bioactivity

Detects Human IL2 Antibody in indirect ELISAs.



Western blot

Detected by Anti-IL2 monoclonal antibody (Catalog
No: YBH121010)